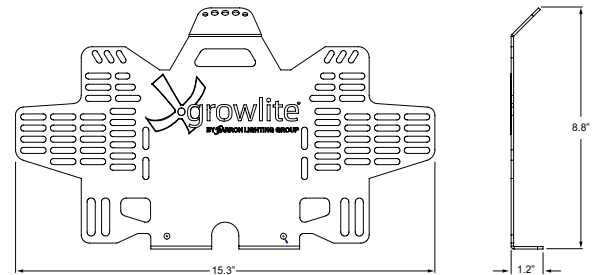
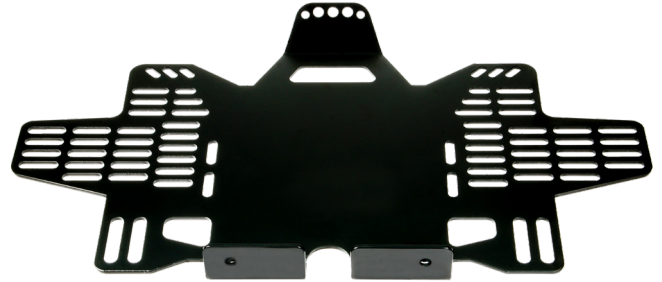


# STINGRAY BRACKET

## Archon DE Ballast Mounting Plate

### FEATURES

- Universal “Stingray” ballast bracket allows for integral vertical or horizontal ballast mounting on the Archon DE reflector system (included in system or as an independent accessory)
- 13 Gauge carbon steel construction
- Black powder coating



### DIMENSIONS

Model	L	W	H
GLA-STINGRAY	15.3"	1.2"	8.8"

### WEIGHT

Model	Weight
GLA-STINGRAY	2.0 lbs / 0.91 kgs

### ORDERING INFORMATION

Example: GLA-STINGRAY

Series/Configuration	Description
GLA-STINGRAY*	Ballast Mounting Plate

\*Compatible with Archon DE Reflector only