

HDE-8

Horticultural Double-Ended (DE) Lamp Reflector Concealed Vacuum Airflow Technology®

The only double-ended horticultural reflector with Concealed Vacuum Airflow Technology®, the HDE combines proven lamp performance with the ability to transfer heat easily from the grow environment. The HDE has flexibility and versatility built into the design with 4-way 8" ducting and included adapters. Growers can customize the HDE as needed for specific grow room applications. A-hinged lens and innovative reflector installation make cleaning and maintenance of the HDE extremely easy.



FEATURES

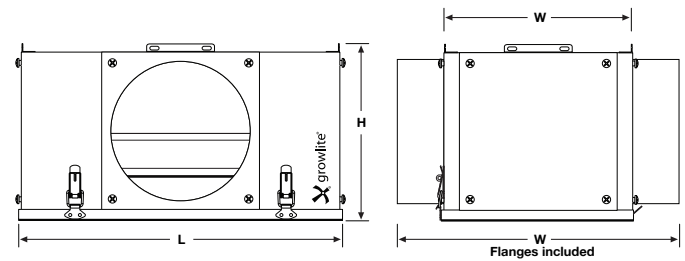
- Patented Concealed Vacuum Airflow Technology® (CVAT) maximizes the hood's photometric performance and thermal dissipation
- Includes 4-way, field-selectable 8" removable ducts, solid plates, and louvered plates for fully sealed air-cooled or non air-cooled operations
- Redesigned sockets make re-lamping easy
- Removable 1/8" thick tempered glass door for optional air-cooled or non air-cooled operation
- Removable door allows for easy lamp access and cleaning
- Durable black powder coated finish

SPECS

- Constructed of heavy-duty 22 gauge steel
- Standard with 15' cord and ballast plug
- HPS DE standard or high frequency lamps
- One (1) pair of V-hooks for mounting
- ETL Listed for Damp Locations
- Five Year Warranty (Terms and Conditions Apply)

**AVAILABLE WHILE
SUPPLIES LAST**

Lamp Sold Separately



DIMENSIONS

Model	L	W	H
GLH-HDE-8	17.5"	10.5"	9.8"
8" Removable Ducts Included (add 5" per Length or Width)	22.5"	15.5"	9.8"

WEIGHT

Model	Unit without Power Cable
GLH-HDE-8	16.6 lbs (7.5 kgs)

ORDERING INFORMATION

Example: GLH-HDE-E-UL

Series/Configuration	Description	
GLH-HDE-8	HDE-8 Reflector	
Accessories*	Description	Weight
GLL-1000-HDEL-HPS	1000W HPS DE lamp	1.0 lbs (0.45kgs)
GLB-1000-DE-240/277	1000W DE ballast 240/277VAC	9.9 lbs (4.49kgs)
GLA-STINGRAY	Ballast Mounting Plate	2.0 lbs (0.91kgs)
System/Configuration*	Description	
GLH-HDE-8-1000-HPS-240/277	HDE-8 Reflector, 1000W HPS DE lamp, 1000W DE ballast	

OTHER COMPATIBLE LAMP AND BALLAST**

- 315W CMH DE lamp - [GLL-315-CSI-DE](#)
- 315W DE ballast 120/277VAC - [GLB-315-A-120/277](#)

*Sold separately

**Consult factory for optional system configurations