

# ARCHON DE

## Double-Ended (DE) Lamp Horticulture Reflector

The ARCHON DE featuring the addition of the SafeDElock™ socket (Patent No. 10,720,741 and 10,873,169) is an upgraded design from our original HDE reflector family. The optical design of the reflector is unique when compared to competitive products. The fine hammertone texture provides more reflective surface area resulting in more intense uniformity than large hammertone reflectors. Photometric performance was increased by reducing the space between the lamp and reflector intersection, minimizing light loss. The reflector was designed with the grower in mind for ease of use and superior yielding performance.

Growlite's team of engineers have developed a patented industry leading socket design that provides safety from electrical shock and ensures the accurate installation of the lamp. The lamps are easily installed in the SafeDElock™ socket from the top of the unit and require the user to rotate the lamp 172° to initiate an electrical/power connection. The SafeDElock™ socket also eliminates the risk of arcing inside the socket due to improper installation.

### FEATURES

- Compact reflector design maximizes DE lamp performance and photometric control
- 95% Reflective aluminum with fine hammertone texture increases intensity and uniformity
- SafeDElock™ socket (Patent No. 10,720,741 and 10,873,169) ensures safe installation of the lamp, eliminating shock and fire hazards which are common with standard DE sockets
- Installation of DE lamps from the top of the unit allows for easier and safer work environment
- Remote ballast mounting capability
- Universal "Stingray" ballast bracket allows for vertical, horizontal or remote ballast mounting (Sold separately)

### SPECIFICATIONS

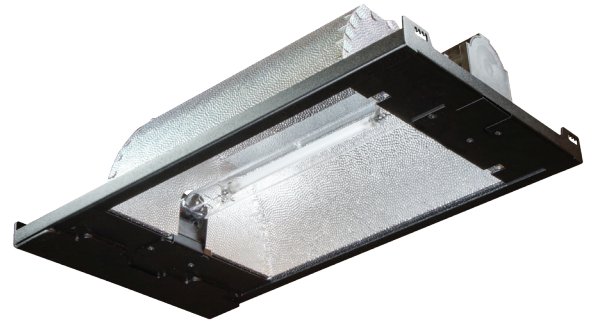
- Constructed of heavy-duty 22 gauge steel
- 12" 16AWG ballast connector for integral ballast mount
- 15' 16AWG lamp to ballast extension cord for remote ballast mount
- One (1) pair of V-Hooks for mounting included
- Five Year Warranty (Terms and Conditions Apply)

### ORDERING INFORMATION

Example: GLH-HDE-E-UL

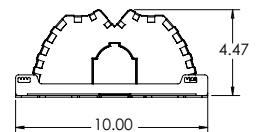
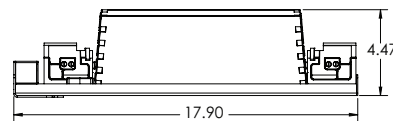
Series/Configuration	Description	
GLH-HDE-E-UL	Archon DE Reflector	
Accessories*	Description	Weight
<a href="#">GLL-1000-HDEL-HPS</a>	1000W HPS DE lamp	1.0 lbs (0.45kgs)
<a href="#">GLB-1000-DE-240/277</a>	1000W DE ballast 240/277VAC	9.9 lbs (4.49kgs)
GLA-STINGRAY	Ballast Mounting Plate	2.0 lbs (0.91kgs)
System/Configuration*	Description	
<a href="#">GLH-HDE-E-UL-1000-HPS-240/277</a>	Archon DE Reflector, 1000W HPS DE lamp, 1000W DE ballast, Ballast Mounting Plate	

\*Sold separately



**AVAILABLE WHILE  
SUPPLIES LAST**  
Lamp Sold Separately

Patent No. 10,720,741  
Patent No. 10,873,169



### DIMENSIONS

Model	L	W	H
GLH-HDE-E-UL	17.9"	10"	4.5"

### WEIGHT

Model	Unit without Power Cable
GLH-HDE-E-UL	4.5 lbs (2.0kgs)